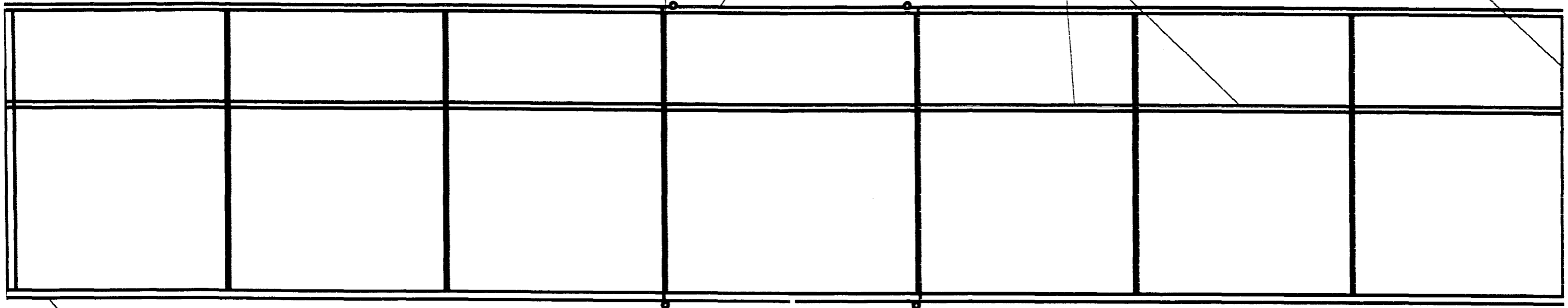


1.2" DIHEDRAL EACH TIP

.062" (7.5#)
Slightly Rounded

.062" (5.5#)
Inserted Between Ribs

.020" Sheet Tips (4#)



.070" Wide x .062" (6#)
Taper to .050" at Rear

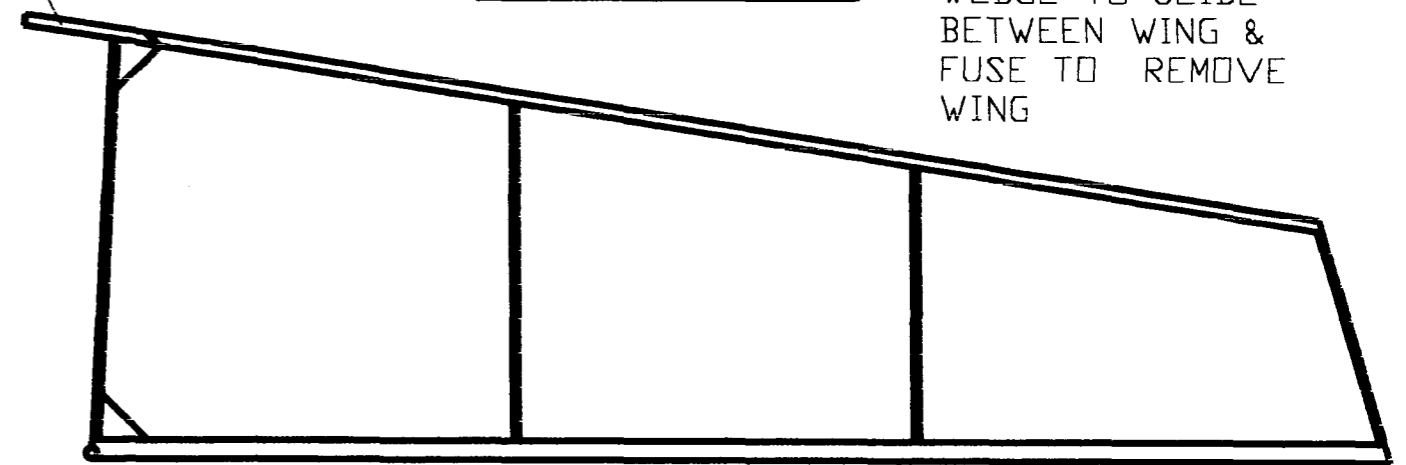
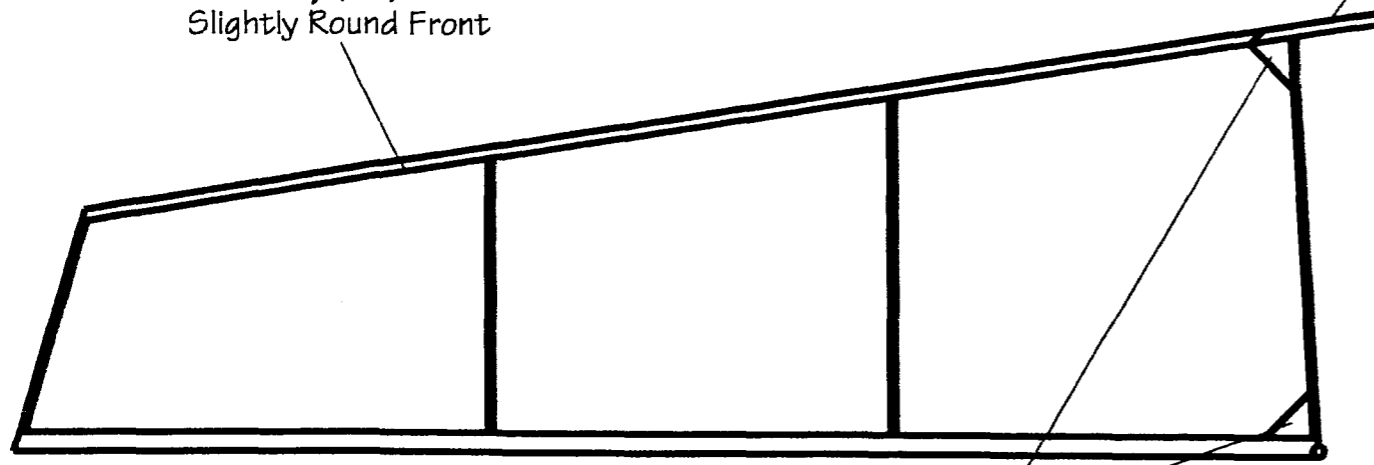
Wing and Stab Ribs
.032"x.062" (4.5#)

Splice (8#) Stab Mousing Posts

.032 WASH-IN ON RIGHT WING PANEL
MODEL FLIES TO RIGHT

.062" sq. (5#)
Slightly Round Front

WEDGE TO SLIDE
BETWEEN WING &
FUSELAGE TO REMOVE
WING



.100"x.062" (4.5#)
Taper to .032" at Rear

.020" Sheet Balsa (4#)

WEIGHTS

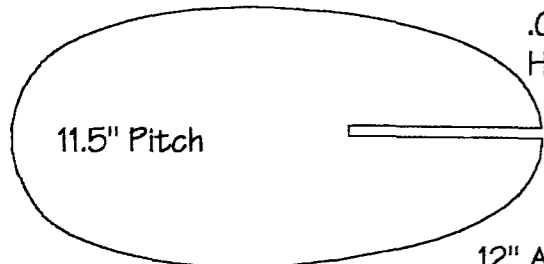
WING DRY .62 GRAM
FUSELAGE DRY 1.0 GRAM-COVERED W/ GEAR 2.3 GRAM
STAB DRY .20 GRAM
RUDDER DRY .045 GRAM- COVERED .15 GRAM
PROP W/ NOSE BLOCK 1.85 GRAM

RUBBER .075 X 38" LOOP TAN II
5000 TURNS

**BOSTONIAN
PATRIOT**

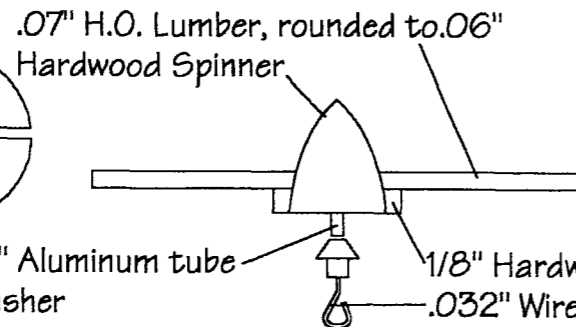
USIC 99 Version
1st Place

DESIGNED BY: L.COSLICK
DRAWN BY: M.PALRANG



11.5" Pitch

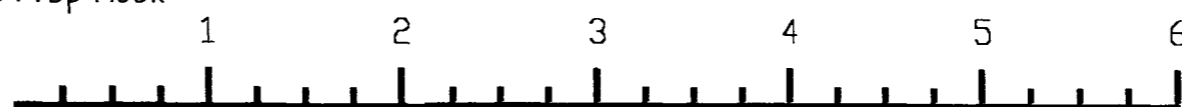
Mike Thomas Style
Prop

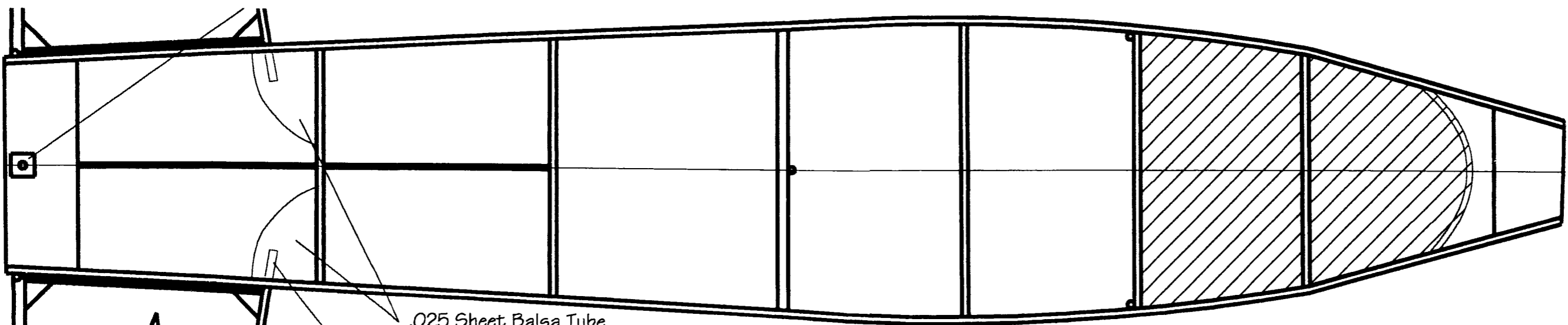


.07" H.O. Lumber, rounded to .06"
Hardwood Spinner

.12" Aluminum tube
Washer

1/8" Hardwood with Countersunk
.032" Wire Prop Hook





.025 Sheet Balsa Tube Supports

.062" Tissue Tubes

.032"x.06" 4.0# Balsa

Install Wing Flush with Top of Fuse

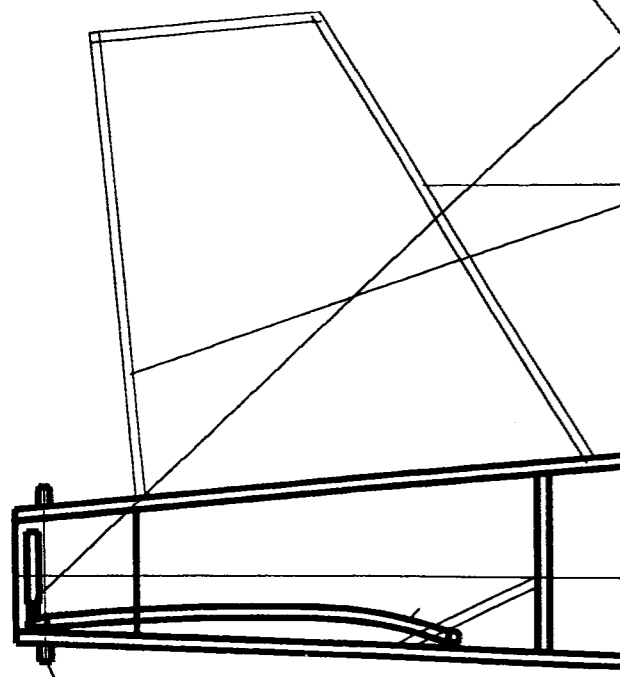
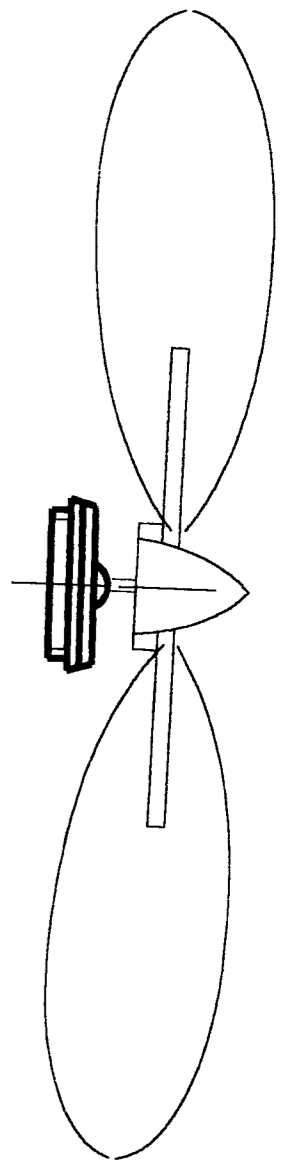
Very Thin Plastic Windshield Covering

PECK-POLYMERS NOSE PLUG

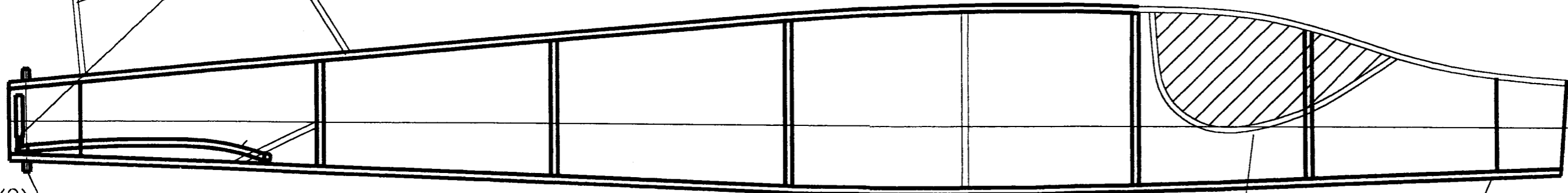
Reverse "S" Hook Propshaft .032" M.W.

Plug Key Built from .10"x.05" Hard Balsa

Longerons are .055" 6.6# Balsa
Uprights are .055" 5.0# Balsa



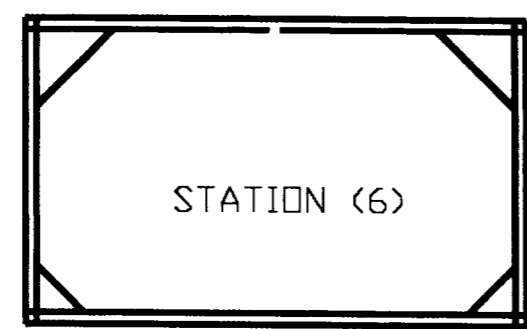
(9) Aluminum Tubing .062" Dia.
Motor Peg



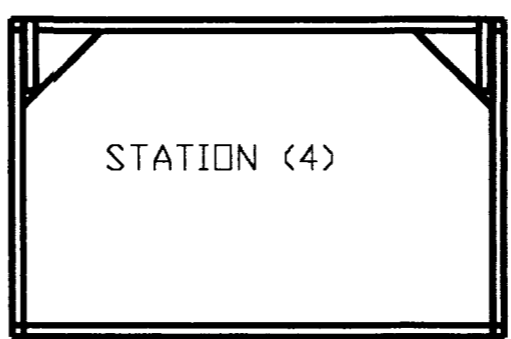
(9) (8) (7) (6) (5) (4) (3) (2) (1)

Window Outlines Laminated from .025"x.055" Balsa

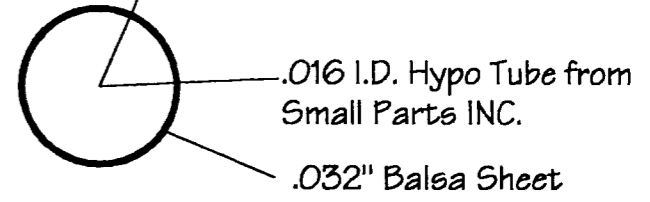
2^RIGHT } AS SHOWN
2^DOWN



STATION (6)



STATION (4)



.016 I.D. Hypo Tube from Small Parts INC.

.032" Balsa Sheet



NOTE: DOPE FUSE FLOOR CROSSPIECES ONLY, DO NOT DOPE FUSE.